









Boasting an impressive ground floor extension and offering generous family sized living accommodation, this delightful four bedroom and two bathroom detached home with ample gardens to the rear, offers an exciting opportunity for those looking for a home on the ever popular Fulford Grange. Internal accommodation comprises entrance hall, cloakroom/WC, lounge, dining room, kitchen and garden room whilst to the first floor four bedrooms and two bathrooms. Features of note include gas central heating and double glazing, to the exterior there is a large driveway to the front providing off street parking for 2+ cars, integral garage and substantial gardens to the rear enjoying a southerly aspect. Sitting close to the A19 and being perfect for Nissan, Doxford International Business park and Amazon workers, the property is well placed for Castletown village centre, Sunderland City centre and major commuting road networks to Newcastle and Durham City. Available with no upward chain, this superb home must be viewed as matter of urgency as considerable interest is anticipated.

MAIN ROOMS AND DIMENSIONS

Ground Floor

Access via UPVC entrance door.

Entrance Hall



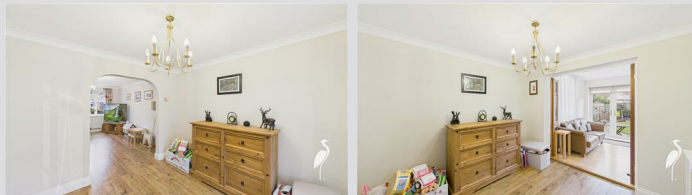
Radiator.

Lounge 13'2" x 15'5"



Double glazed bay window to front and radiator. Open plan into dining room.

Dining Room 9'9" x 9'8"



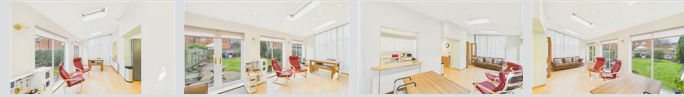
Radiator and doors to sun room. Door to kitchen.

Kitchen 15'5" x 7'5"



Range of wall and base units with countertops over incorporating 1 1/2 bowl stainless steel sink and drainer with mixer tap. Integrated oven, 5 burner gas hob and cooker hood. Space for a fridge freezer and dishwasher. Radiator and built in shelving. Door to utility and open plan into sun room.

Garden Room 23'4" x 9'5"



Double glazed windows and UPVC French patio doors to rear. Radiator and 3x Velux windows.

Utility 11'11" x 4'10"



Wall and base units with countertops over incorporating a single bowl stainless steel sink and drainer. Space for

washing machine and tumble dryer. Double glazed windows to rear and radiator. Door to garage.

Cloakroom/WC



Low level WC and washbasin, radiator and double glazed window to front.

First Floor Landing



Access point to loft.

Bedroom 1 9'8" x 12'8"



Double glazed window rear, radiator and door to en suite.

Visit www.peterheron.co.uk or call 0191 510 3323

Tried. Trusted. Recommended. City Branch 20 Fawcett Street Sunderland SR1 1RH Fulwell Branch 15 Sea Road Fulwell Sunderland SR6 9BS

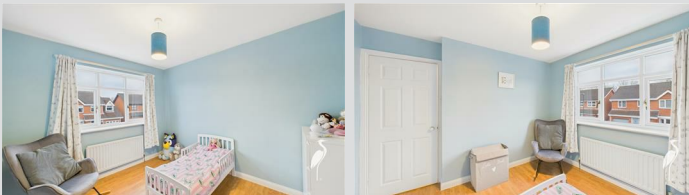
MAIN ROOMS AND DIMENSIONS

En-Suite Shower Room



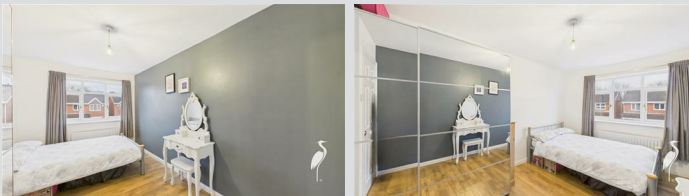
Low level WC, washbasin set into vanity unit, bidet and shower cubicle, chrome heated towel rail and double glazed window.

Bedroom 2 8'9" x 15'6"



Double glazed window to front and radiator.

Bedroom 3 9'3" x 10'8"



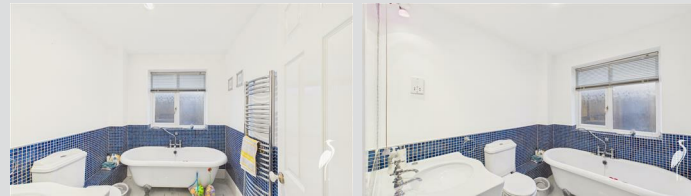
Double glazed window to front and radiator.

Bedroom 4 10'0" x 9'9"



Double glazed window to rear and radiator.

Bathroom



Low level WC, washbasin and bath, chrome heated towel rail and double glazed window.

Outside



Garden to the front with driveway providing off street parking leading to garage, whilst to the rear there is good size garden laid mainly to lawn with planted borders and patio seating area.

Council Tax Band

The Council Tax Band is Band D.

Tenure Freehold

We are advised by the Vendors that the property is Freehold. Any prospective purchaser should clarify this with their Solicitor.

Important Notice - Particulars

Peter Heron Ltd for themselves and for the vendors of this property whose agents they are, give notice that:- The particulars are set out for general guidance only for the intending Purchasers and do not constitute part of an offer or contract. Whilst we endeavour to make our sales particulars accurate and reliable, if there is anything of particular importance which you feel may influence your decision to purchase, please contact the office and we will be pleased to check the information. Do so particularly, if contemplating travelling some distance to view the property. All descriptions, dimensions, references to conditions and necessary permissions for use and occupation and other details are given in good faith, and are believed to be correct, however any intending purchasers should not rely on them that statements are representations of fact, but must satisfy themselves by inspection or otherwise as to the correctness of each of them. Independent property size verification is recommended.

Lease details, service charges and ground rent (where applicable) are given as a guide only and should be checked and confirmed by your Solicitor prior to exchange of contracts. No person in the employment of Peter Heron Ltd has any authority to make or give any representation or warranty whatever in relation to this property or these particulars, nor to enter into any contract on behalf of Peter Heron Ltd, nor into any contract on behalf of the Vendor. The copyright of all details and photographs remain exclusive to Peter Heron Ltd.

Please note that in the event the purchaser uses the services of Peter Heron Conveyancing in the purchase of their home, Peter Heron Ltd will be paid a completion commission of £300.00 by Movewithus Ltd.

Visit www.peterheron.co.uk or call 0191 510 3323

Tried. Trusted. Recommended. City Branch 20 Fawcett Street Sunderland SR1 1RH Fulwell Branch 15 Sea Road Fulwell Sunderland SR6 9BS

MAIN ROOMS AND DIMENSIONS

Sea Road Viewings

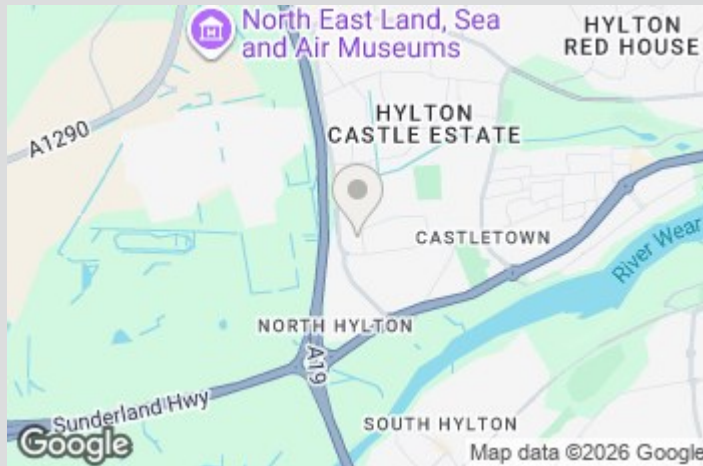
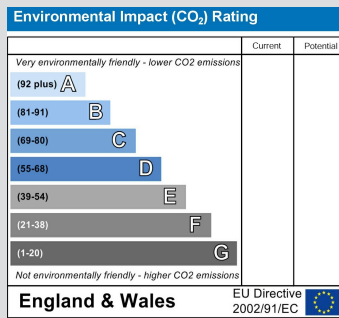
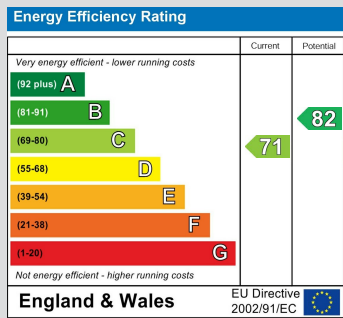
To arrange an appointment to view this property please contact our Sea Road branch on or book viewing online at peterheron.co.uk

Opening Times

Monday to Friday 9.00am - 5.00pm Saturday 9.00am - 12noon

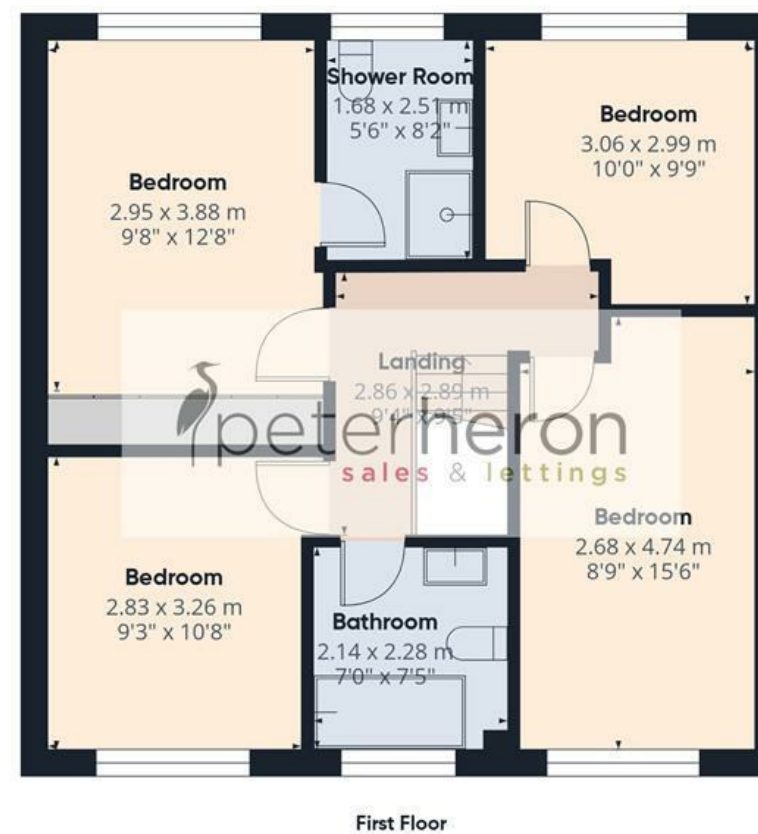
Ombudsman

Peter Heron Estate Agents are members of The Property Ombudsman and subscribe to The Property Ombudsman Code of Practice.



Visit www.peterheron.co.uk or call 0191 510 3323

Tried. Trusted. Recommended. City Branch 20 Fawcett Street Sunderland SR1 1RH Fulwell Branch 15 Sea Road Fulwell Sunderland SR6 9BS



Approximate total area⁽¹⁾

142.6 m²

1535 ft²

(1) Excluding balconies and terraces

Calculations reference the RICS IPMS 3C standard. Measurements are approximate and not to scale. This floor plan is intended for illustration only.